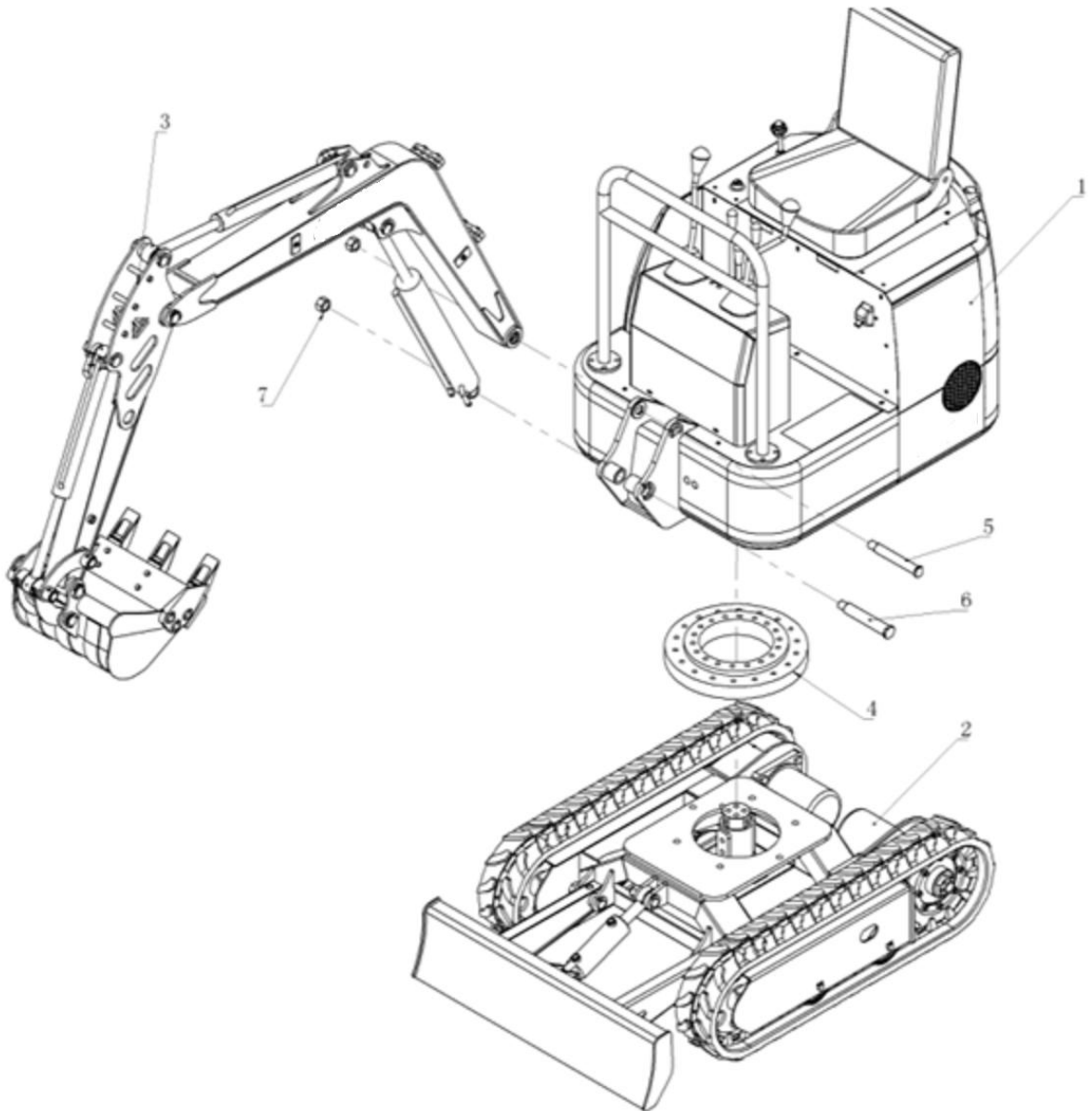


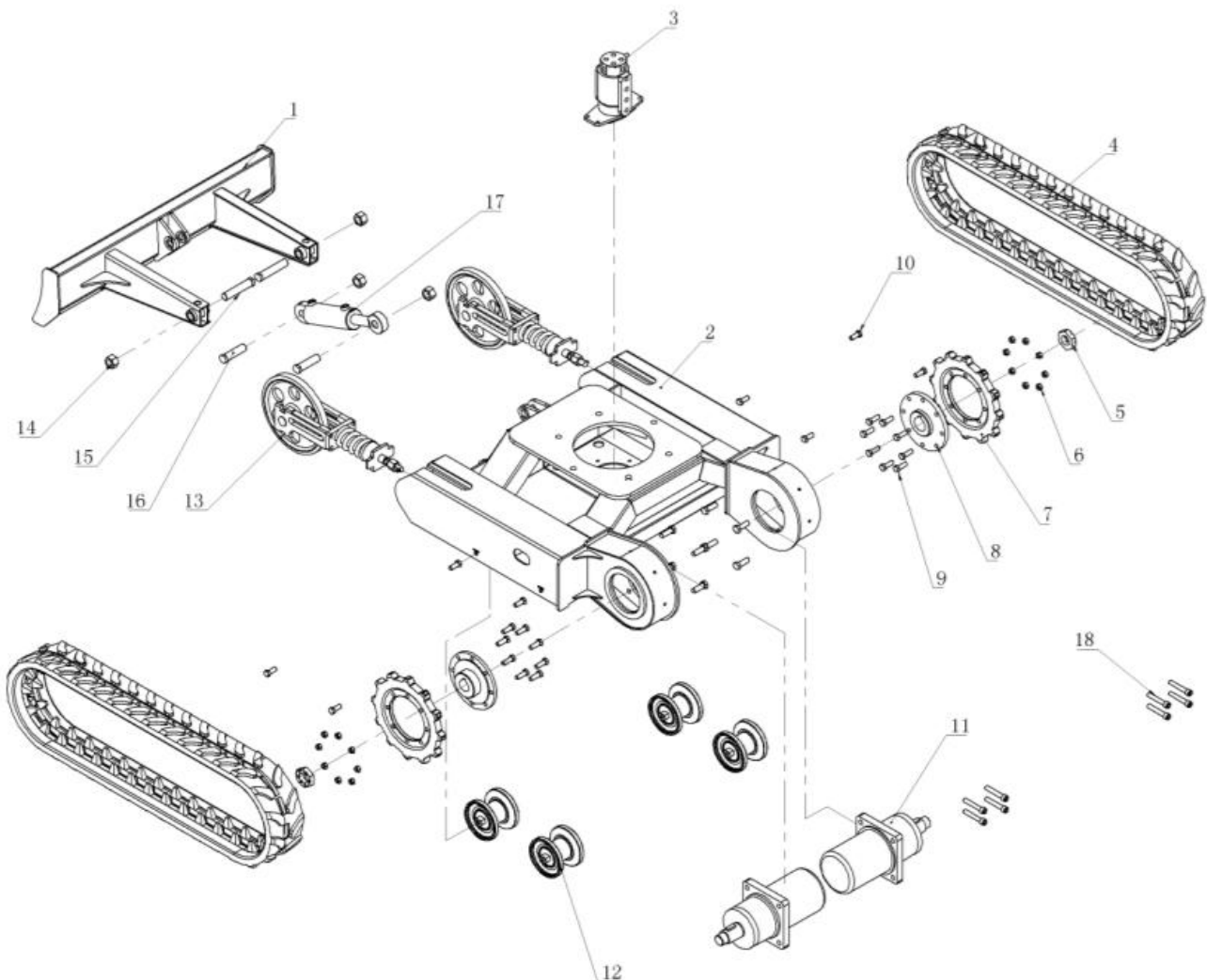
CX10T Excavator assembly Parts list

| No | Name | Qty |
|----|---|-----|
| 1 | Upper frame assembly | 1 |
| 2 | Low chassis assembly | 1 |
| 3 | front loading part assembly | 1 |
| 4 | slewing support assembly | 1 |
| 5 | boom and Upper frame connect pin | 1 |
| 6 | boom cylinder and Upper frame connect pin | 1 |
| 7 | lock sleeve | 2 |



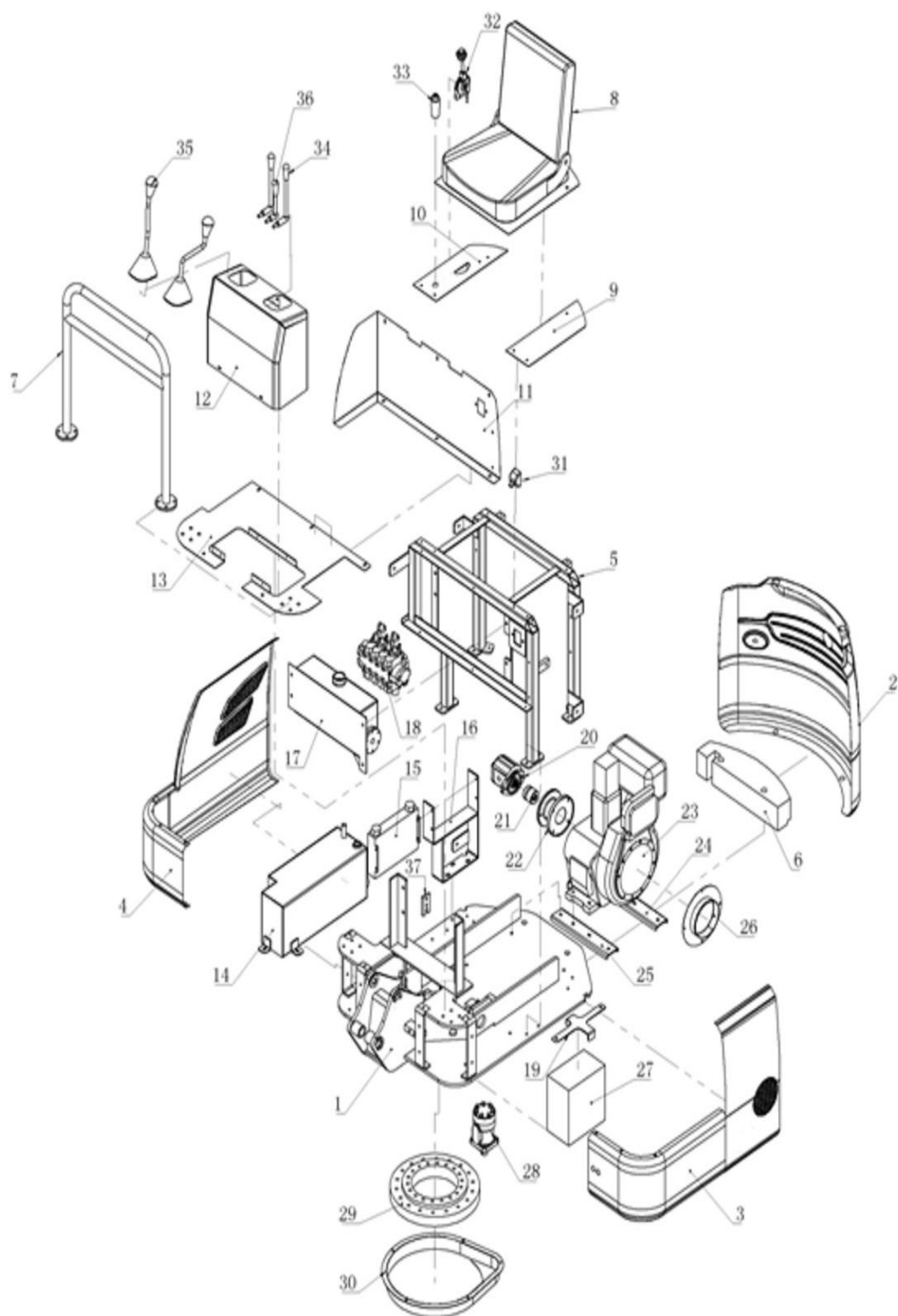
Down chassis

| No | Parts No | Parts name | Qty |
|----|----------|-------------------------|-----|
| 1 | 1.1 | Push plate welded | 1 |
| 2 | 1.2 | down chassis welded | 1 |
| 3 | 1.3 | swivel joint | 1 |
| 4 | 1.4 | rubber track | 2 |
| 5 | 1.5 | lock nut | 2 |
| 6 | 1.6 | driving wheel nut | 16 |
| 7 | 1.7 | driving wheel | 2 |
| 8 | 1.8 | connecting plate | 2 |
| 9 | 1.9 | driving wheel bolt | 16 |
| 10 | 1.10 | thrust wheel fixed bolt | 8 |
| 11 | 1.11 | travel motor | 2 |
| 12 | 1.12 | thrust wheel | 4 |
| 13 | 1.13 | guide pulley assembly | 2 |
| 14 | 1.14 | pivot pin nut | 4 |
| 15 | 1.15 | push plate connect pin | 2 |
| 16 | 1.16 | cylinder connect pin | 2 |
| 17 | 1.17 | push plate cylinder | 1 |
| 18 | 1.18 | guide wheel fixed bolt | 8 |



Upper frame

| No | Parts No | Parts name | Qty |
|----|----------|-----------------------------------|------|
| 1 | 2.1 | upper frame welded | 1 |
| 2 | 2.2 | machine back shell cover parts | 1 |
| 3 | 2.3 | machine left shell cover parts | 1 |
| 4 | 2.4 | machine right shell cover parts | 1 |
| 5 | 2.5 | inner frame welded | 1 |
| 6 | 2.6 | machine back counter weight plate | 1set |
| 7 | 2.7 | handrail frame | 1 |
| 8 | 2.8 | seat and support plate | 1 |
| 9 | 2.9 | left upper cover plate | 1 |
| 10 | 2.10 | right upper cover plate | 1 |
| 11 | 2.11 | L shape cover plate | 1 |
| 12 | 2.12 | operating floor | 1 |
| 13 | 2.13 | pedal plate | 1 |
| 14 | 2.14 | hydraulic oil tank | 1 |
| 15 | 2.15 | hydraulic oil radiator | 1 |
| 16 | 2.16 | hydraulic oil radiator holder | 1 |
| 17 | 2.17 | diesel oil tank | 1 |
| 18 | 2.18 | multitandem valve | 1 |
| 19 | 2.19 | battery holder | 1 |
| 20 | 2.20 | mian pump | 1 |
| 21 | 2.21 | coupling parts | 1 |
| 22 | 2.22 | pump disc | 1 |
| 23 | 2.23 | engine | 1 |
| 24 | 2.24 | engine back support holder | 1 |
| 25 | 2.25 | engine front support holder | 1 |
| 26 | 2.26 | suction canal | 1 |
| 27 | 2.27 | battery | 1 |
| 28 | 2.28 | swing motor | 1 |
| 29 | 2.29 | swing support | 1 |
| 30 | 2.30 | dust cover | 1 |
| 31 | 2.31 | general electric switch | 1 |
| 32 | 2.32 | hand throttle | 1 |
| 33 | 2.33 | key starter | 1 |
| 34 | 2.34 | traveling control handle | 2 |
| 35 | 2.35 | working control handle | 2 |
| 36 | 2.36 | front bucket control handle | 1 |
| 37 | 2.37 | swing joint snap-gauge | 1 |



excavating device

| No | Parts No | Parts name | Qty |
|----|----------|---------------------------------------|-----|
| 1 | 3.1 | boom | 1 |
| 2 | 3.2 | arm | 1 |
| 3 | 3.3 | bucket | 1 |
| 4 | 3.4 | connecting rod | 1 |
| 5 | 3.5 | push rod | 1 |
| 6 | 3.6 | boom cylinder | 1 |
| 7 | 3.7 | arm cylinder | 1 |
| 8 | 3.8 | bucket cylinder | 1 |
| 9 | 3.9 | boom middle pin | 1 |
| 10 | 3.10 | arm cylinder back pin | 1 |
| 11 | 3.11 | arm cylinder front pin | 1 |
| 12 | 3.12 | boom front pin | 1 |
| 13 | 3.13 | bucket cylinder back pin | 1 |
| 14 | 3.14 | arm middle pin | 1 |
| 15 | 3.15 | bucket cylinder front pin | 1 |
| 16 | 3.16 | arm front pin | 1 |
| 17 | 3.17 | bucket and connecting rod connect pin | 1 |
| 18 | 3.18 | bushing | 7 |

